

Stéphane de Labrusse

La météore Nethserver



Développeur Nethserver

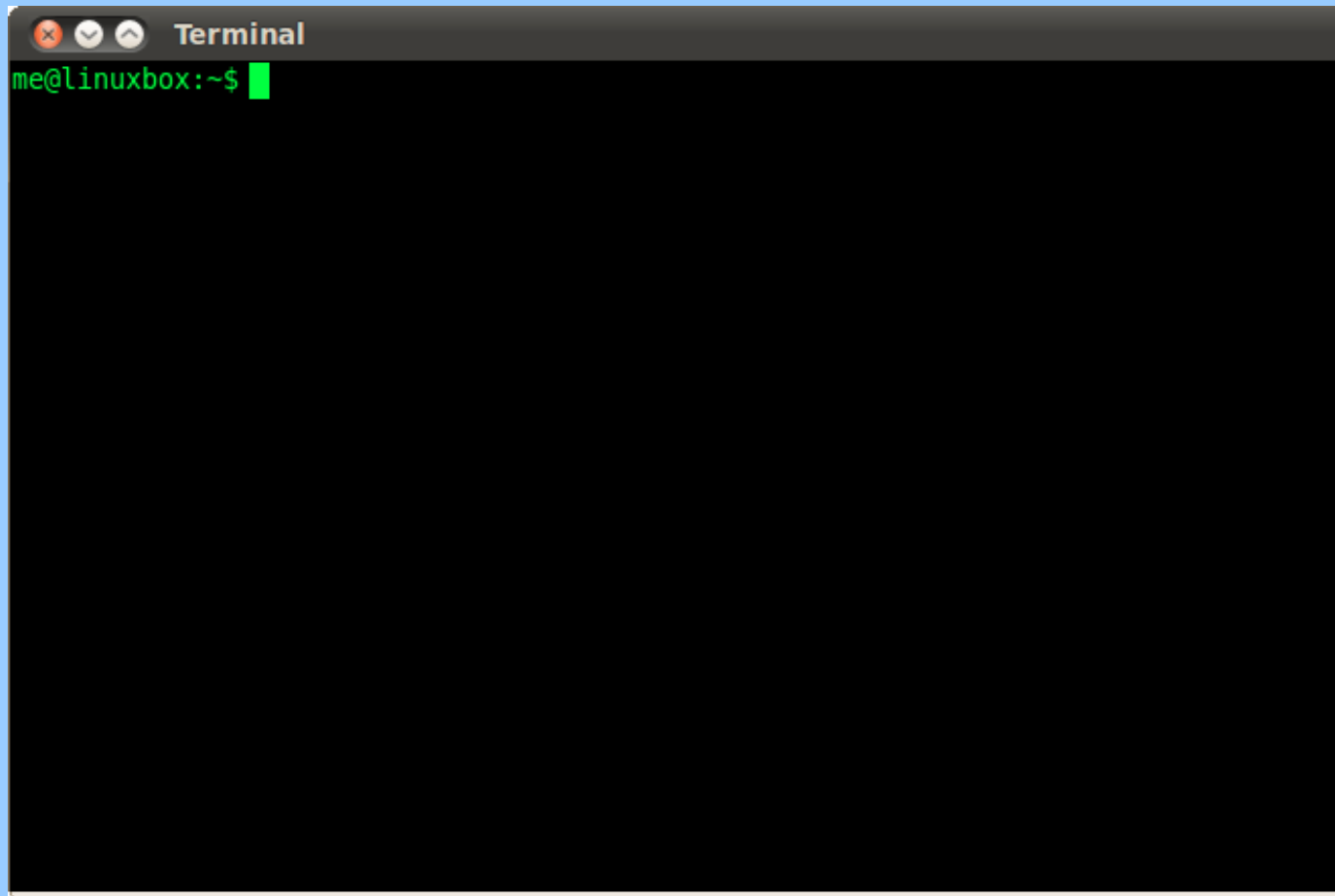
Pseudo :stephdl

Github :github.com/stephdl

Twitter :@stephdelab

stephdl@de-labrusse.fr

Avec un shell

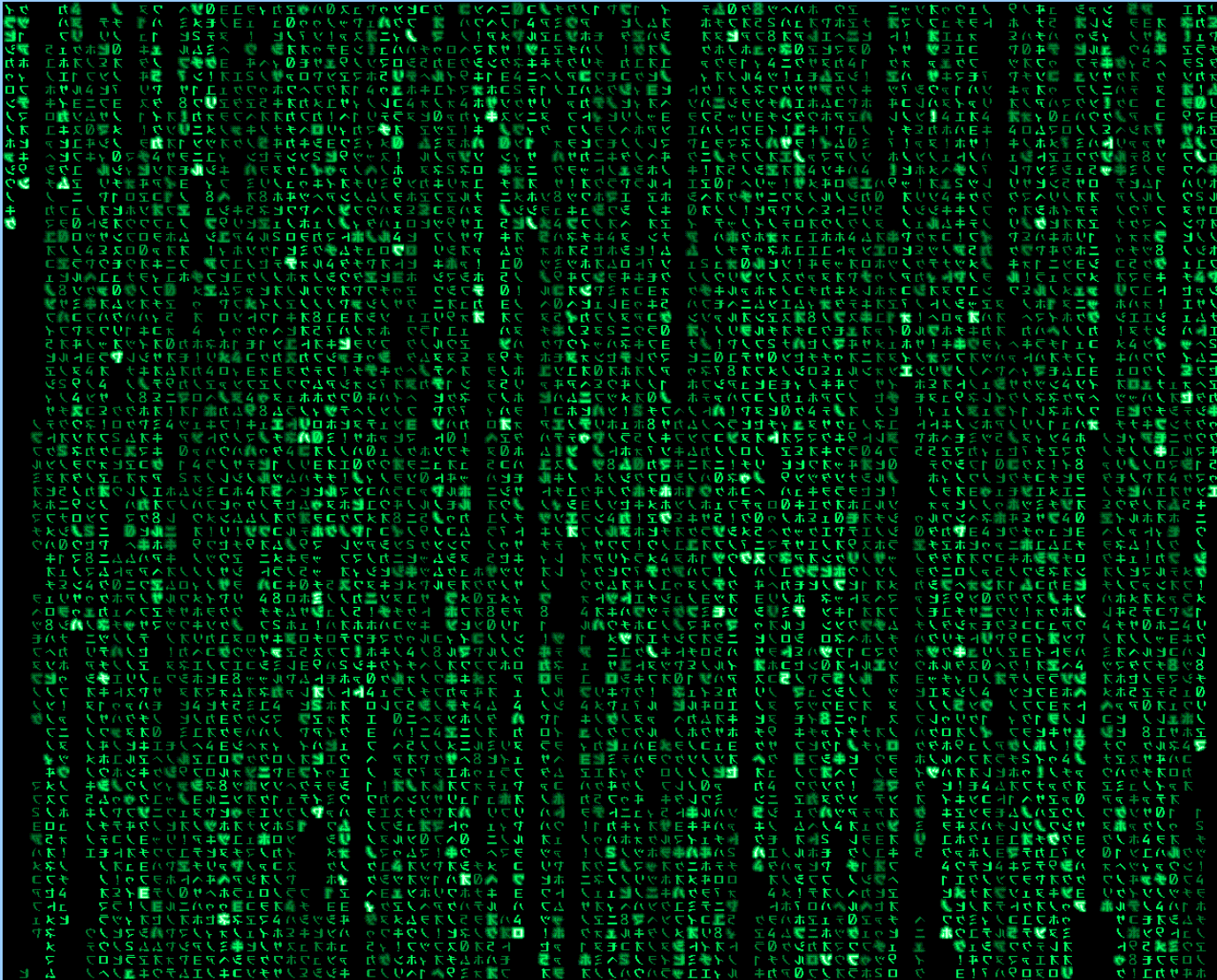


Vous contrôlez tous



Oui, mais...

Pas toujours Facile



Pas toujours compréhensible



Intraitable sur la syntaxe

`rm -rf / myFile`



Demande un haut niveau



Bloque les moins expérimentés



Donc...l'homme créa NS

Nethserver est un système d'exploitation
~~pour les amoureux de linux, désigné pour~~
~~les petites et moyennes entreprises~~

Qui veut...

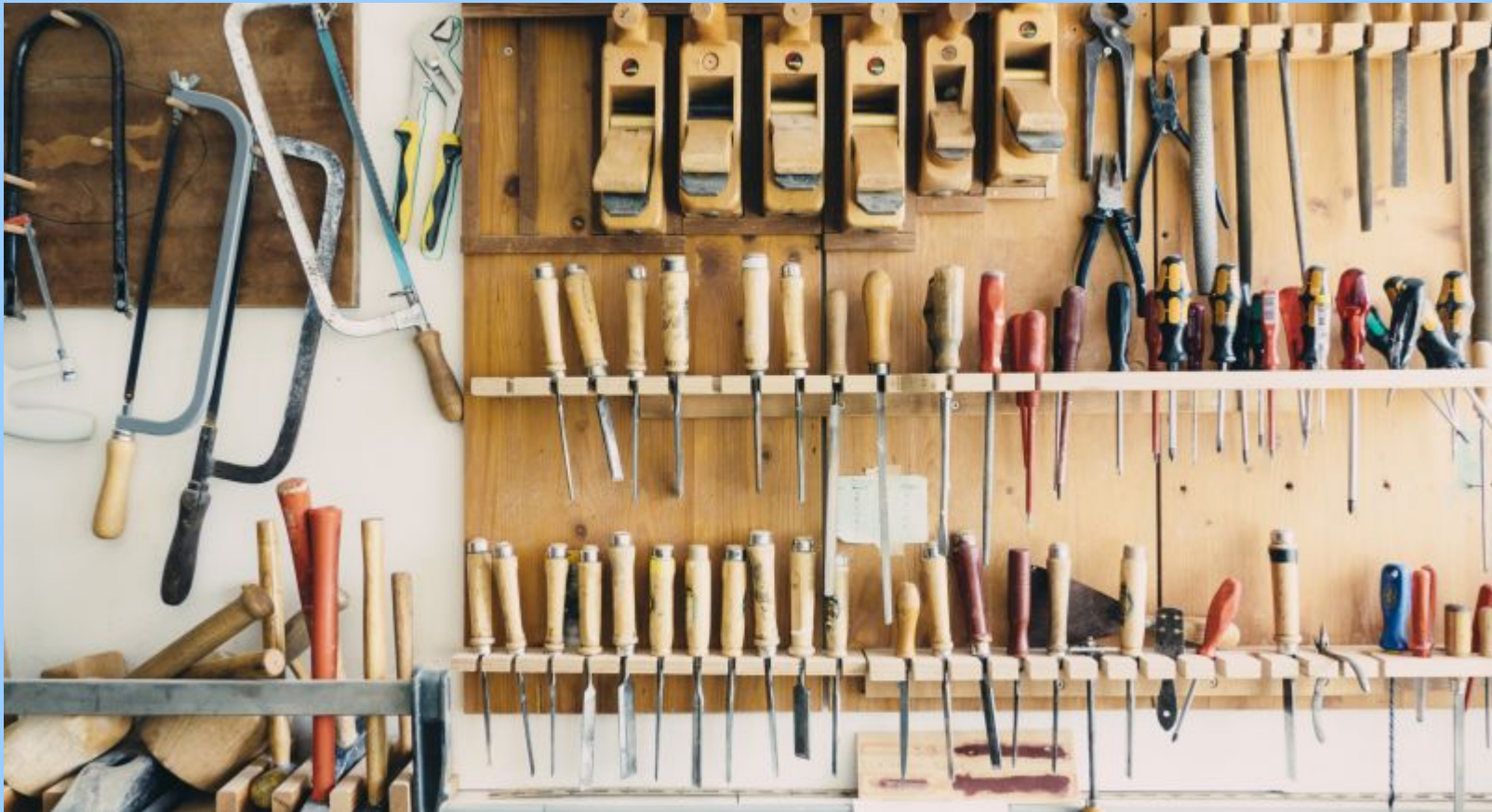
Ne laisser personne derrière !



Aider le sysadmin



Amener les outils appropriés



NS, c'est quoi ?

Un clone de Centos



deep-seeded

Une communauté



 nethserver
COMMUNITY

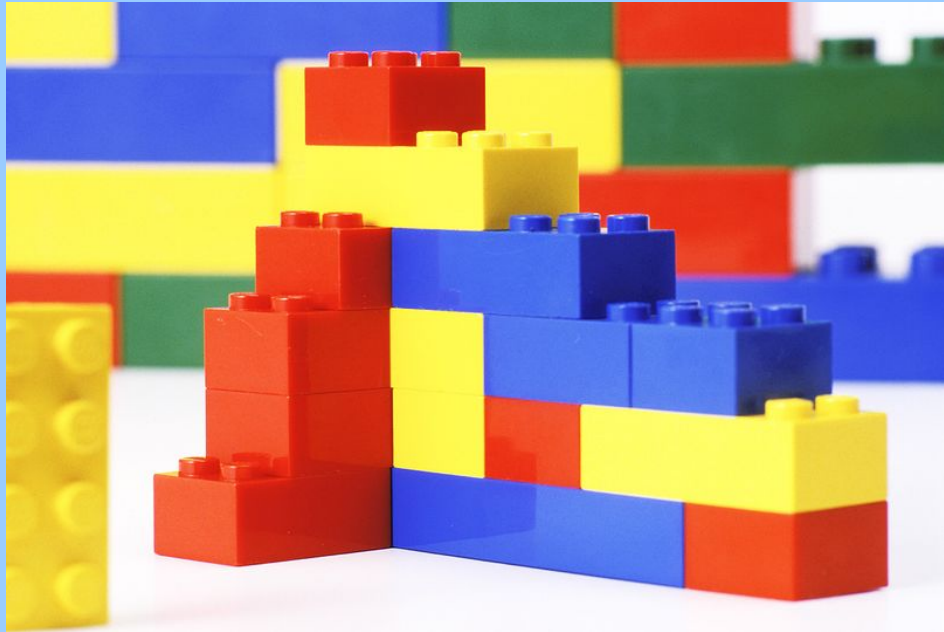
fueled
by community

Une culture du GUI

The screenshot displays the nethserver web interface. The top navigation bar includes 'System status', 'Services', 'Printers', 'UPS', 'Applications', 'Mail quota', 'VPN', and 'IPS'. A search bar is located on the left. The main content area is divided into several panels:

- Release:** System version: NethServer release 6.5 (Final), Kernel release: 2.6.32-431.1.2.0.1.el6.x86_64
- General informations:** Load 1 / 5 / 15 minutes: 0.14 / 0.18 / 0.09, Uptime: 40 d 21 h 7 m, Date and time: Sun 08 Mar 2015 - 14:09
- Hardware:** Vendor: Bochs, Model: Bochs, CPU model: 2 x QEMU Virtual CPU version 1.0
- Memory:** Usage: 1934 / 2007 MB, Free memory: 73 MB, Usage: 96%, Free swap: 43 / 1024 MB, Free swap: 981 MB, Usage: 4.2%
- Root partition:** Usage: 949 98 / 9 84 GB, Available: 8 42 GB, Usage: 9.4%
- Software RAID status:** md1: OK, Level: RAID1, Devices: 2/2 (sdb1,sda1); md2: OK, Level: RAID1, Devices: 2/2 (sdd2,sd32)
- DNS and DHCP:** DNS server: Enabled, Remote DNS: 75.127.97.7, 75.127.97.6, DHCP server: Disabled
- Network:** Hostname: localhost, Domain: localdomain, Gateway: 10.0.42.1, DNS: 75.127.97.7, 75.127.97.6
- Accounts:** Users: 2, Groups: 3, FTP accounts: 1
- Antivirus database:** Status: Not updated, Last update: 1979-01-01 00:00
- Backup:** Status: Enabled, Schedule at: 1:00, Destination: -, Type: Incremental, Result: Last backup
- Interfaces:** eth0: MAC: 96:c4:39:56:5c:ce, Link: OK (Mbps), IP / Netmask: 10.0.0.7 / 255.255.0.0, Type: none
- Mail server:** Configured domains
- Multi WAN:**

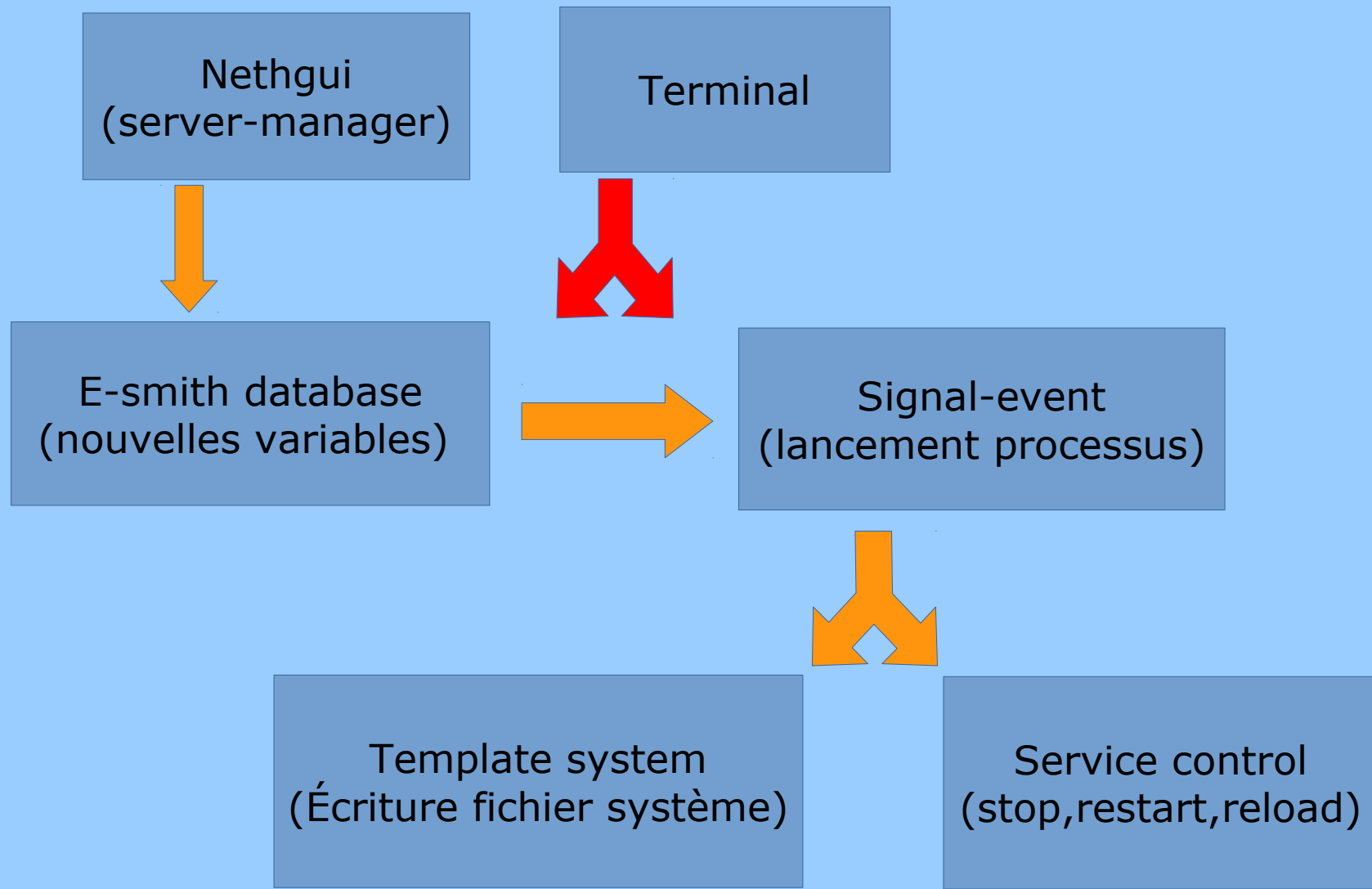
Une approche modulaire



FRUITFUL
AND EXTENSIBLE

**extensible
branches**

Un moteur robuste



Front-end = Php

Code

Backend = Perl

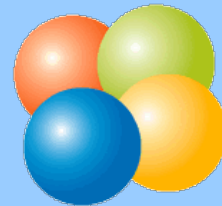
Historique du projet



2013



Fork



SME Server

SME 8 en panne !

2014

NS6 is born

2015

The rise of the community

Community.nethserver.org

2017, NS7

- CentOS 7
- Samba4 AD ou OpenLdap
- Httpd24
- Php54 (PHP{56,70,71} par software collection)
- Mariadb55 (mariadb101 par software collection)
- Email (Postfix,dovecot,clamav,amavis)
- Firewall (shorewall)
- Intrusion detection (suricata)
- VPN (openVPN & Ipsec/L2TP)
- Bandwidth monitor (NtopNG)
- Webmail (sogo & webtop)
- Web proxy (Squid)
- Filtrage web (ufdbGuard)
- Voip (Freepbx, Asterisk)
- ...

2017, état des modules

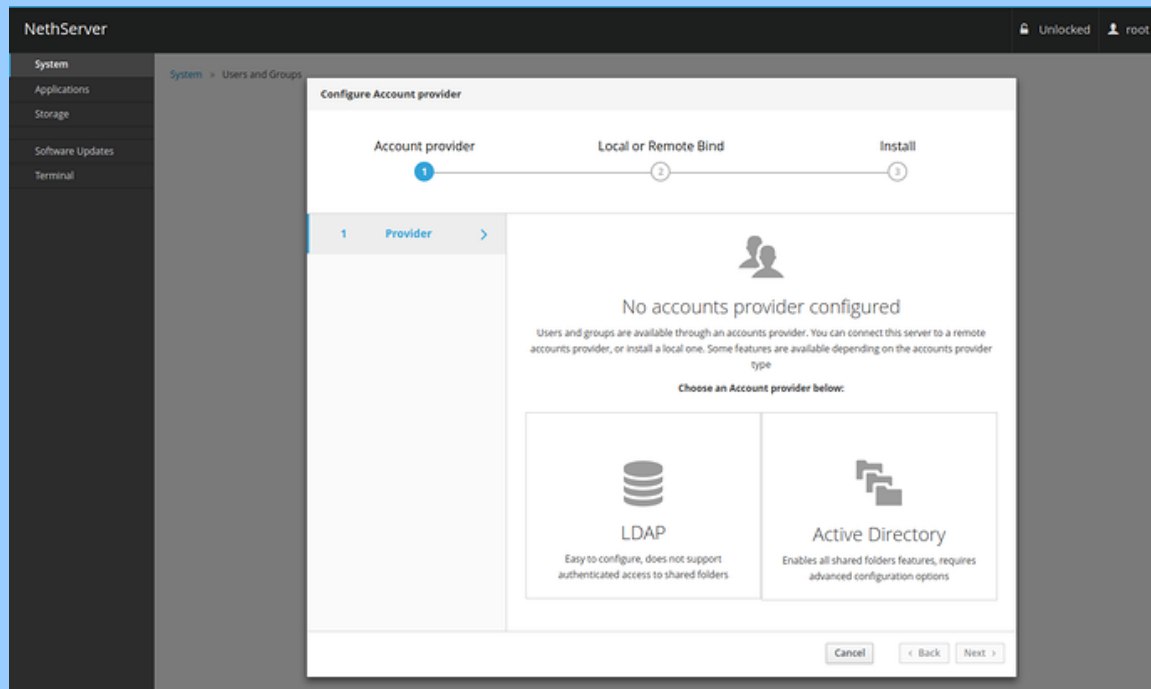
• Ampache	2017/09/02 11:31
• Automysqlbackup	2017/09/02 11:33
• Awstats	2017/09/02 11:34
• BackupPC	2017/09/02 11:34
• Clamscan (antivirus)	2017/09/02 11:34
• Crontab	2017/09/02 11:35
• Ddclient	2017/10/05 07:26
• Delegation of Authority	2017/09/02 11:35
• Dokuwiki	2017/09/02 11:35
• Fail2ban	2017/09/02 11:36
• Glances	2017/09/02 11:36
• Gipi	2017/09/02 11:36
• Linux-dash	2017/09/02 11:37
• Madsonic	2017/09/02 11:37
• Mariadb101	2017/10/05 07:29
• moodle	2016/12/20 17:33
• NFS	2017/09/02 11:37
• OCSInventory-NG	2017/09/02 11:37
• Password	2017/06/27 18:07
• Php-SCL	2017/09/04 16:14
• PhpLDAPadmin	2017/09/02 11:38
• PhpMyAdmin	2017/09/02 11:38
• PhpPgAdmin	2017/09/02 11:38
• Phpsettings	2017/09/02 11:39
• Shell In A Box	2017/09/02 11:39
• Sogo	2017/10/12 07:37
• Transmission	2017/09/02 11:40
• TT-rss	2017/09/02 11:40
• Urbackup	2017/10/05 07:26
• Wordpress	2017/10/05 07:26
• Yum-cron	2017/09/02 11:41

Wiki.nethserver.org

À venir



Un nouveau server-manager



Full web
(html,css,JS)

Cockpit Based

NS8 ???

Nouveau système de template

Template system  Ansible

NS8 ???

Centos toujours ?

NS8 basée sur ~~Centos8~~

Questions

